

Dean, School of Kinesiology Leadership Profile

July 2025



An aerial view of the Kinesiology Building

Executive Summary

With a strong financial stance and energetic growth, the University of Michigan's (U-M) School of Kinesiology (SoK) seeks a Dean whose growth mindset and future-forward understanding of the opportunities in the fields of kinesiology, health sciences, and sport management will provide strategic and visionary leadership committed to furthering its existing excellence. Reporting directly to Provost [Laurie McCauley](#), the new Dean will be a collaborative member of a strong team. They will be expected to provide a plan for continued strategic growth and support, capitalizing on the recent construction of the SoK building and the School's fiscal strength, while also serving as a collaborative partner in advancing overall university success.

Following a decade of successful decanal stewardship, the SoK's next Dean will be a critical leader for the School, continuing to unify its diverse disciplines, further elevating research for faculty and students, and setting the curricular agenda in collaboration with faculty, while strengthening and sustaining a culture that values every individual and their unique contributions. They will responsibly allocate and utilize resources, making sage fiscal decisions which ensure the quality of the student experience and the excellence of their academic training.

Founded in 1817, U-M has a long history of dedication to public service and engagement. As one of the first public universities in the nation, it has maintained the highest levels of distinction in education, scholarship, and research while remaining broadly accessible to a range of students. It consistently ranks in the top three U.S. Public Universities, serving 67,000 students on three campuses.

The most successful candidates will, at a minimum, hold an earned doctorate in a relevant discipline, with a scholarly record appropriate for appointment as a full professor with tenure. They will have significant experience as an academic leader, with skills suitable for leading a school of the size and complexity of the School of Kinesiology. To submit a nomination or express personal interest in this position, please see the Procedure for Candidacy at the end of this document.

Opportunities and Expectations for Leadership

The Dean of the School of Kinesiology will report directly to the Provost and Executive Vice President for Academic Affairs, [Dr. Laurie McCauley](#). The Dean will also work in close collaboration with other senior officers of the University and the Deans of its schools and colleges, as well as serve on key committees and with the other Deans of the Health Sciences Council. They will advance the core values of the University: integrity, equity, respect, diversity, inclusion, and innovation and be an effective spokesperson for the School.

In addition, the Dean, School of Kinesiology will be expected to:

- **Provide Inspirational, Creative, and Collaborative Leadership**

The child health movement, demographic shifts contributing to an aging population, arrival of the American Football Club Ann Arbor teams (members of the National Premier Soccer League), imminent start of the Olympics in the US, booming wearables business, and greater involvement in fitness activities across all generations combined with the fiscal strength of the School locate the SoK at an exciting moment in time. The next Dean has the opportunity to provide leadership and processes that inspire internal and external collaborations that yield unique and pivotal accomplishments. They will support the development of creative projects in teaching and research that leverage the School's varied disciplines to develop curriculum, pedagogies, partnerships, and research that continue to position the SoK as best in the nation and strive to not only push boundaries but also be a model for how to break them.

- **Develop a Strategic Plan and Steward Its Implementation**

As the fourth largest school for undergraduate enrollment at U-M, the SoK has evolved from the department of physical education, established in 1921, into the flourishing school it is today (officially designated in 2008). At present, the School is on a strong growth trajectory. With this growth comes the welcomed challenges of providing curricular innovation, appropriate additions of world-class faculty and staff, advancement of research, and the long-term strategic allocation of resources, inclusive of facilities. The Dean will collaborate with faculty and staff to co-create a strategic plan that leverages growth, provides a mission and vision to which all can contribute, and provides clear goals supported by the School's community. Fundamental to the strategy will be the excellent preparation of students for future roles in the fields of applied exercise science, athletic training, movement science, and sport management, and the high-impact contribution to society through cutting-edge research and interventions.

The new Dean will also be responsible for the success of the strategic plan. To that end, they will provide roads to implementation, as well as periodic assessments of the plan's effectiveness and success. They will be necessarily forward-thinking, using a proactive lens and out-of-the-box approaches that address future challenges in higher education and the opportunities for Kinesiology to impact the world that are just appearing on the horizon.

- **Continue to Support a Positive Culture**

The SoK community comprises staff, students, and faculty who value their collegial and supportive relationships. Recently, the faculty participated in a culture assessment, and a few key takeaways emerged. Given the authentic investment of the faculty into this process, a high level of expectation of actions to address the results, as well as the staff and students' vital contributions to the school's culture, the next Dean will be called upon to provide leadership that emphasizes and values the contributions of every individual, to address the perceived disconnect between faculty, staff, and leadership, and enhance transparent and participative decision-making processes. The next Dean will also have the opportunity to examine pay equity, tenure and promotion, inclusivity concerns for non-tenure-track roles, empowerment of faculty and staff to perform their roles, accountability, and equity between disciplines. Most importantly, the Dean will utilize transparent, timely, and inclusive communication and collaborative leadership to strengthen inclusivity, foster collaboration, and encourage innovation.

- **Ensure Excellent Fiscal Health for the School**

Distinct from most of its peers, the SoK is in excellent fiscal health. This financial position presents many

opportunities, and the Dean will possess the financial acumen to make responsible decisions that ensure the School's continued fiscal stability. The Dean will also develop positive external relationships with individuals, funding agencies, and corporate entities to steward philanthropic gifts, support grant-winning, and build industry partnerships that benefit the School. They will collaborate with faculty to develop curricular and co-curricular opportunities that develop new, reliable revenue streams, and in the exploration of the monetization of research and data and technology transfer opportunities.

- **Retain the School's Collegial Atmosphere**

Consistently across the School's constituents, the community deeply values how the SoK has maintained its "small-school feel" despite its rapid growth. It is essential that the next Dean stay focused on the main goal: to deliver an excellent education to students so that they may thrive on whatever path they choose after graduation. The Dean will invest in a practice of visible leadership – extending and taking opportunities to interact with faculty, staff, and students outside of their office, walking the campus, and striking up informal conversations that build relationships. They will invest in learning each discipline's strengths and challenges. They will build authentic relationships with faculty, students, and staff. They will be more interested in elevating others to success than in promoting their own. They will be the School's best advocate and champion.



A research participant undergoes surface electromyography (EMG) in the Musculoskeletal Biomechanics & Imaging Laboratory

Professional Qualifications and Personal Qualities

The next Dean of the University of Michigan's School of Kinesiology will possess an earned doctorate in a discipline relevant to health science, human movement, or sport management, accompanied by a distinguished record of scholarship that warrants appointment as a full professor with tenure. A history of effective academic leadership, alongside demonstrated proficiency in fiscal stewardship and resource generation, are essential for this role.

Moreover, the ideal candidate will ideally embody many, if not all, of the following qualifications and attributes:

- **Academic Leadership and Disciplinary Stature:** A recognized leader in research or creative activity within the disciplines of the School of Kinesiology, demonstrated excellence in academic management and faculty governance, with prior experience in establishing curricular and scholarly priorities.

The candidate should demonstrate a successful track record in recruiting, mentoring, and retaining faculty across diverse sub-disciplines. The next Dean will be tasked with fostering intellectual curiosity, maintaining rigorous academic standards, inspiring the pursuit of excellence, and positioning the School at the forefront of discovery and practice.

- **Strategic and Fiscal Acumen:** A documented history of success in budgeting, long-range strategic and financial planning, and data-informed decision-making.

The new Dean should exhibit comfort with complex revenue models – including grants, philanthropic contributions, and auxiliary enterprises – and possess the discernment to align financial resources with mission-critical objectives.

- **Collaborative and Relational Skills:** A proven record of constructing productive partnerships across academic units, health systems, and external organizations.

The Dean will be expected to cultivate trust, model transparent communication, and engage faculty, students, staff, alumni, and donors in shared governance and collective achievement. They will be inherently collaborative and invite the input of others as they make decisions.

- **Commitment to Inclusive Practices:** A proven ability to cultivate an environment where every community member thrives.

The successful candidate will advocate for fair hiring and promotion processes, promote teaching and research that respect diverse perspectives, and uphold accountability to values of inclusivity throughout the community. They will look to provide equity as a through-line in their leadership and be clear in their demonstration of appreciation for every individual's contribution to the School's success.

- **Resource Development and Advocacy:** An adept communicator, charismatic advocate, and energetic fundraiser with experience in securing private philanthropy, industry partnerships, and governmental support.

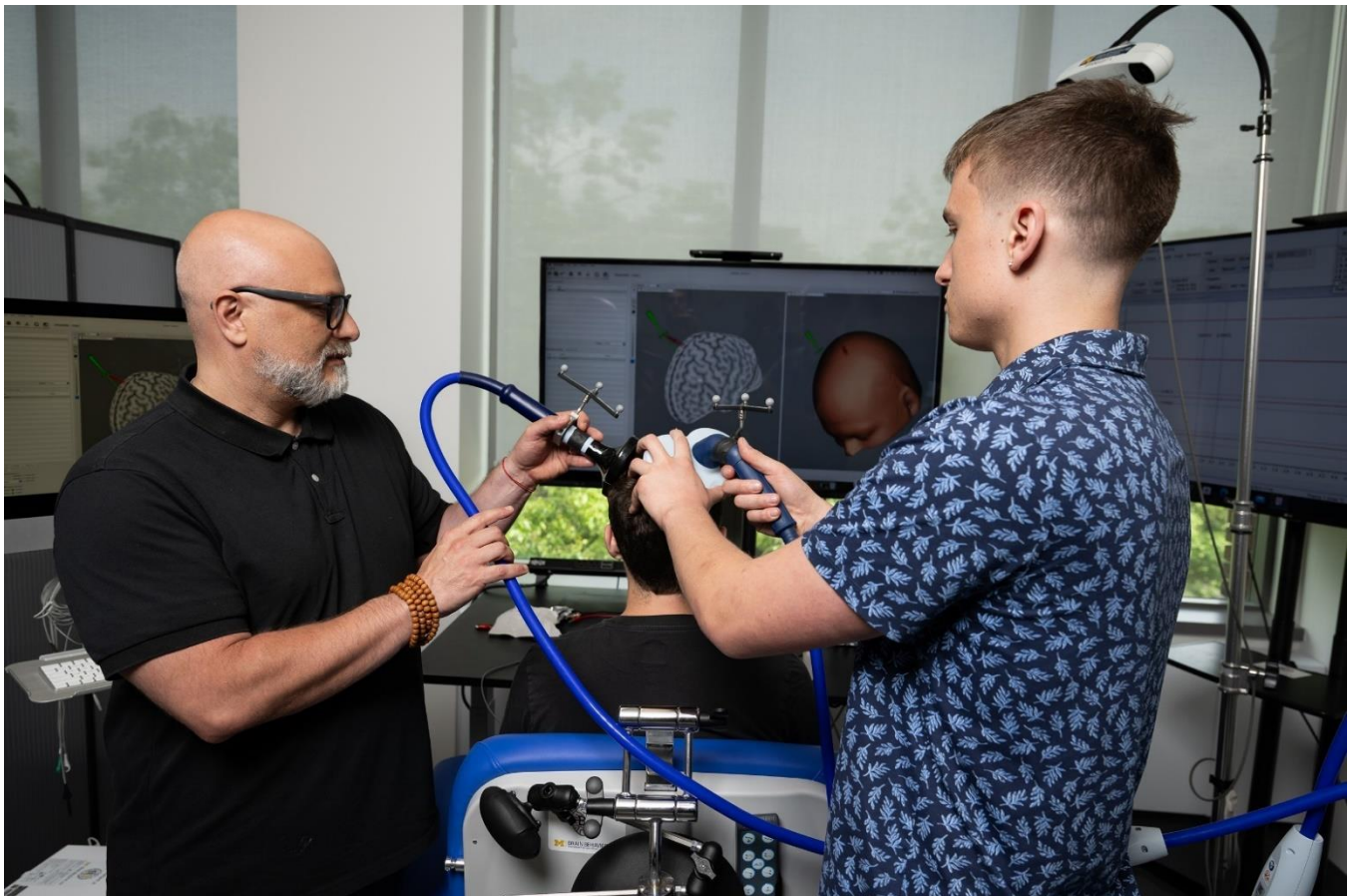
The Dean will articulate the School's value proposition to alumni, donors, and policymakers and successfully enhance its influence and impact. They will utilize their strong interpersonal skills to establish and foster robust external relationships.

- **Innovative and Entrepreneurial Mindset:** A readiness to explore novel pedagogies and research areas, embrace emerging technologies, tolerate risk, and anticipate trends that shape the science of movement and the business of sport.

The Dean will be expected to encourage creative solutions, nurture interdisciplinary initiatives, and continue to drive the School's national prominence.

Personal Attributes:

- Unquestioned integrity,
- sound judgment,
- resilience in the face of challenges,
- enthusiasm for mentoring students and colleagues,
- a visible and approachable presence, and
- a proclivity for celebrating successes, addressing setbacks with optimism, and exemplifying the high standards and core values of the University of Michigan.



Faculty member Michael Vesia, left, shows students how to use the Transcranial Magnetic Stimulation (TMS) device in the Brain Behavior Laboratory

About the School of Kinesiology



An aerial view of graduating students getting ready for commencement in the Kinesiology Commons

Overview

The [School of Kinesiology](#) examines how the science of physical activity and the business of sport can be used to improve lives.

The faculty are engaged in a wide range of research for the greater good – from understanding the role of physical activity in preventing disease, to improving mobility in aging and recovering populations, to managing sport-related industries and helping athletes stay safe. They teach the next generation of change-makers through current best practices, new techniques, and hands-on practice.

Its students learn both in and beyond the classroom – in the lab, on the field, and in the front offices. Students work with researchers, implement health interventions, rehabilitate injured athletes, and develop case studies that sports teams and leagues will use to make real decisions.

The staff are known for their innovation – constantly working on ways to better support faculty and students, engage alumni and donors, strengthen the School's partnerships, and amplify the work of the School.

The SoK provides exemplary experiences and education by offering the personal touches of a small school with all the advantages of a top public university. Through its core values of collaboration, creativity, inclusion, integrity, and respect, the School seeks to ensure a positive, supportive community in which scholarship and research thrive.

Facilities & Operations

The former E.H. Kraus Natural Science Building became SoK's home in the fall of 2020. Designed by renowned architect, Albert Kahn, the space has been a university landmark since 1915. After a transformative \$120M renovation, it is now the [Kinesiology Building](#) – a fully renovated, state-of-the-art learning and research hub with 26,000 sq. ft. of teaching and learning space and 36,000 sq. ft. of research space, all containing top-of-the-line equipment and amenities.

For the first time in the School's history, all students, faculty, and staff are together under one roof, right in the heart of U-M's central campus – learning, discovering, and growing in amazing new classrooms, research labs and centers, academic and career advising offices, and collaboration spaces.

Research

- 2,300 sq. ft. Clinical Research Suite & Exercise Research Center
- 8,700 sq. ft. Biomechanics Suite comprised of 4 high bay labs and 3 low bay labs
- 5,300 sq. ft. NeuroSuite
- 3 student data suites
- 9,000 sq. ft. of open wet lab
- 3,000 sq. ft. vivarium

Teaching & Learning

- 7 classrooms
- 2 active learning classrooms
- 6 class labs
- Distance learning classroom
- Computer lab

Community

- Convenient central location
- Large central commons area
- Collaborative meeting spaces
- All faculty, staff, and research under one roof

The School of Kinesiology is financially strong. Operating revenue totaled \$47M in fiscal year 2024-2025, including revenues from general funds (78.4%), sponsored research (16.4%), and gifts/investments/other sources (5.2%). The market value of the School's endowment was \$31.8M as of March 31, 2025.



Clinical faculty member Laura Richardson teaches students exercise assessment protocols

Degree Programs

Applied Exercise Science (Degree Offered: Bachelor of Science)

Applied Exercise Science students study the biological, social, psychological, business, research, and clinical aspects of physical activity. Through coursework and experiential learning, students learn how to assess and promote physical activity across the lifespan using preventative and therapeutic methods.

Athletic Training (Degree Offered: Master of Science)

Athletic Training students focus on building expertise in the prevention and treatment of injuries, both in athletes and other populations, through on-the-field clinical experience, challenging coursework, and access to the nation's top researchers and medical practitioners.

Intraoperative Neurophysiology (Degree Offered: Master of Science *NEW: approved fall 2026 recruitment*)

The U-M School of Kinesiology has developed a specialized Intraoperative Neurophysiology (IONM) educational program for Movement Science majors – **the first accredited IONM program of its kind in the world**. In this program, students learn how to monitor the central and peripheral nervous systems of patients undergoing surgical procedures. This neurophysiologic information helps the surgeon perform a safer, and sometimes more thorough, procedure.

Movement Science (Degrees Offered: Bachelor of Science, Master of Science, Doctor of Philosophy)

Movement Science students examine human movement from a variety of perspectives, including injury prevention and rehabilitation, sport medicine, biomechanics, exercise physiology, health and fitness, and/or motor control and development and gain insights that allow them to contribute to major medical advances and more effective models of health care.

Sport Management (Degrees Offered: Bachelor of Arts, Master of Science, Doctor of Philosophy)

Sport Management students study the social, economic, and operational impacts of sport business from the inside out. This includes a wide array of knowledge required to manage the sport enterprise, including entrepreneurship, urban planning, finance, economics, diversity, social justice, corporate social responsibility, marketing, and law.



Students visit the International Olympic Committee Headquarters and other European Olympics venues

Students

The School of Kinesiology is one of the fastest-growing colleges at the University of Michigan. Its graduates are needed more than ever to address the complex health and sport issues of our time. Through an engaged curriculum providing relevant, hands-on research, and global learning experiences, its students are more than ready to put their passion to work.

The School has approximately 1,250 undergraduate students, making it the [fourth largest school for undergraduate enrollment at U-M](#), with an average undergraduate class size of 33 students. The graduate program has experienced rapid growth in the past 15 years, with a current enrollment of approximately 200 graduate students. The Ph.D. program is ranked #1 in the nation by the National Academy of Kinesiology.

U-M has a high selectivity rate and Michigan Kinesiology is no exception, with an undergraduate selectivity rate (12.1%)¹ that is slightly lower than the U-M applicant pool². In fall 2025, the graduate programs had an overall selectivity rate of 12.2% for Ph.D.³ and 52.9% for master's³. The Ph.D. program selectivity is consistent with the Rackham Graduate School average⁴, while the master's program has a higher selectivity rate⁴.

Students' learning inside and outside the classroom challenges them to solve real-world problems alongside – or sometimes even for – professionals working in the field. Opportunities include:

- Projects for leading companies
- Clinical rotations
- Internships
- Research
- [27 student organizations and service groups](#)
- [Global experiences](#), including work, research, volunteering, and education abroad options

In addition to the resources and partnerships across U-M, we also have a vast network of industry collaborations and supportive alumni across the country. The career development team hosts info sessions, career fairs, workshops, and alumni speakers that can set U-M students up to succeed, whatever profession they choose. The dedicated [Kinesiology Alumni Society](#) and [Sport Management Advisory Board](#) further provide students with alumni and industry leader mentorship.

Past student internships include:

- ESPN
- EXOS
- Live Nation
- Madison Square Garden
- MLB
- MLS
- NFL
- Nike
- Johns Hopkins Medicine
- Nationwide Children's Hospital
- Octagon
- Rehabilitation Institute of Chicago
- United States Army Research Institute for Environmental Medicine (USARIEM)
- US Olympics and Paralympics
- Physical Therapy clinics across the country



Students help a patient at Michigan Medicine improve his mobility

Campus Partners

Other schools and colleges at U-M contribute to its status as one of the top public research universities in the country. The SoK faculty take every opportunity to partner with their talented colleagues, broadening the impact of their research and creating more numerous collaborations. These collaborations include projects at:

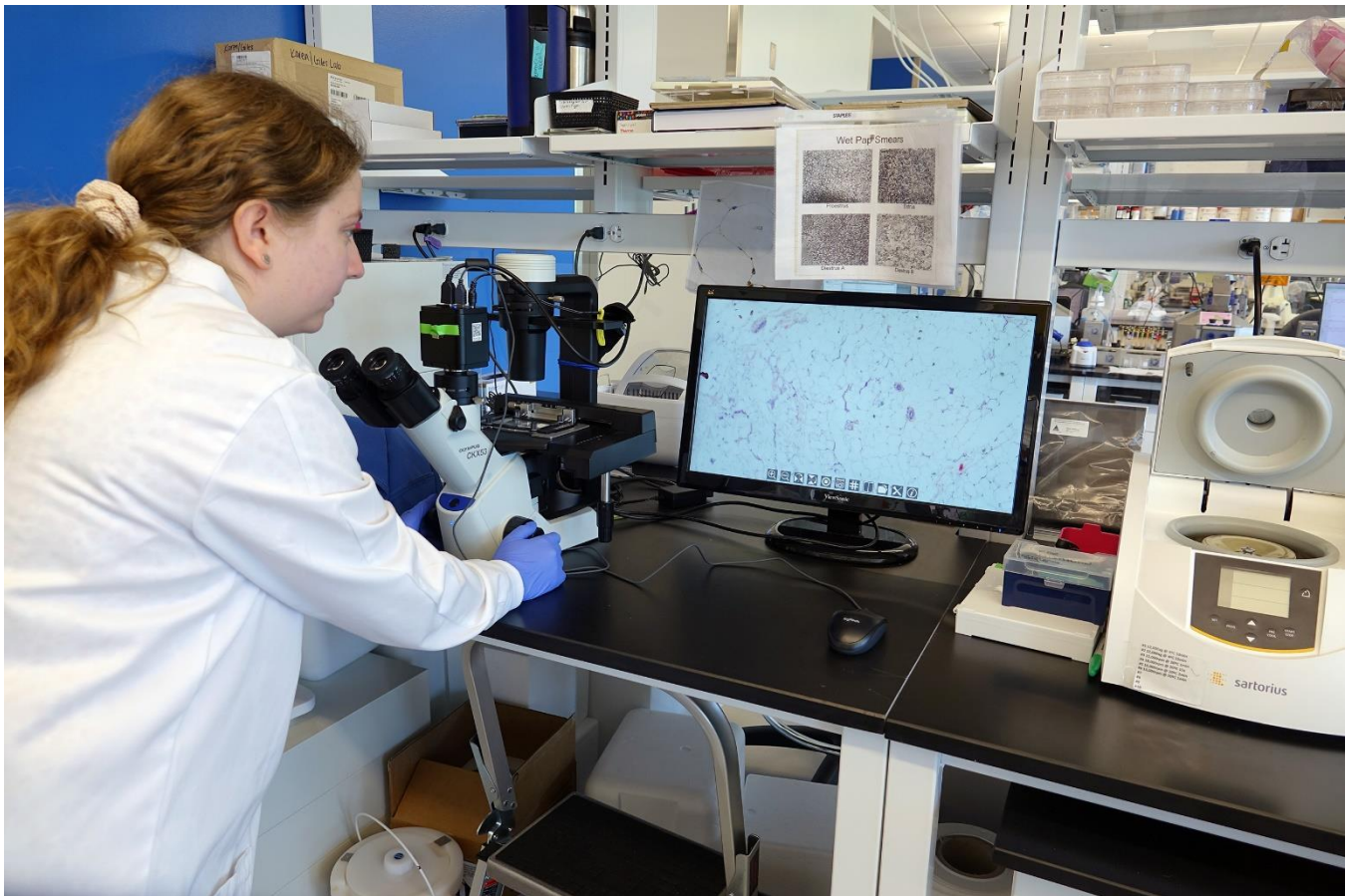
- Michigan Medicine
- Athletics
- Ross School of Business
- College of Engineering
- School of Public Health
- School of Information
- Taubman College of Architecture & Urban Planning
- College of Literature, Science & the Arts
- Institute for Social Research
- U-M Precision Health
- U-M Center for Interprofessional Education



Clinical faculty member Ron Wade takes students on a behind-the-scenes tour of the Detroit Tigers

Faculty

The Michigan Kinesiology faculty are notable scholars who are engaged in a wide range of studies, from the role of neuromuscular systems in controlling movement to the business of managing sport opportunities and experiences; from ways to prevent concussions to new approaches to enhance physical activity. Michigan Kinesiology faculty are making viable contributions in their quest to: (a) explore the complex issues and dynamics of obesity, diabetes, cardiovascular disease, cancer, disability, amputations, rehabilitation, and sport injuries.; (b) develop innovative ways to prevent disease and create sustainable, healthy communities; (c) accelerate business growth and urban redevelopment through sport; (d) promote social justice in/through sport and physical activity; and (e) intersection of physical activity/exercise and oncology research, including cancer prevention, treatment and survivorship. The School's 41 tenure-line and 12 clinical faculty have rich and varied backgrounds and are leaders in their fields. Many of the faculty hold joint appointments with other U-M units. They serve as principal investigators on federal awards from National Institutes of Health, National Science Foundation, Department of Defense, and NASA, as well as on grants from a number of foundations and organizations (including the American Diabetes Association, American Cancer Society, National Athletic Trainers Association, and the NCAA), and support from corporations (including Adidas, Apple, Olympia Development, Lockheed Martin Corporation, Samsung, and Therabody). Many serve as editors or on editorial boards of highly regarded professional journals.



A student studies the anatomy of tissues in the Exercise Oncology Laboratory

Research

From exploring how movement and exercise impact individual health to how physical activity and sport can benefit U-M communities, the 35 [research labs and centers](#) at Michigan Kinesiology address a wide range of complex issues that affect us all throughout life. Their work creates sustainable and healthy communities, finds new solutions to prevent and improve injury and illness, and accelerates business growth and urban redevelopment through sport.

SoK's researchers specialize in the following areas:

- Injury prevention and rehabilitation
- How the body moves and functions
- Exercise for health and well-being
- Using physical activity to manage illness and aging
- Childhood physical activity and development
- Community impact
- Sport marketing and management
- Sport policy and analytics
- Science of behavior change
- Digital health

The School is also home to two university-wide initiatives: The [U-M Concussion Center](#) and the [Health Performance & Sport Science Center](#). The School has also received its first "P" Grant and established, in partnership with Penn State University, the [Roybal Center](#), which translates basic discoveries about motivations and behavior change into scalable and potent interventions and real-world tools to improve physical activity adherence and enhanced cognitive function.



A research participant helps a student test wearable exercise technology in the Michigan Performance Research Laboratory

Culture, Equity, & Community

The University of Michigan community is committed to building an environment that values and respects every person, regardless of gender, age, race, sexual orientation, cultural background, religion, nationality, or beliefs.

In alignment with the vision of the University, the School of Kinesiology also celebrates and is committed to [culture, equity, & community](#), which enriches the learning environment and enhances innovation and overall productivity. Through SoK's [core values](#) of collaboration, creativity, inclusion, integrity, and respect, they seek to ensure a positive, supportive climate in which all individuals are welcome.



A student in the Rehabilitation Biomechanics Laboratory helps a research participant test a new prosthetic hand

Sources:

- ¹ Michigan Metrics. Admissions Selectivity and Yield (KIN101). Accessed 6/30/2025.
- ² Office of Admissions. Process Summary Reports. Accessed 6/30/2025.
- ³ Business Objects. Active in Program Report. Accessed 6/30/2025.
- ⁴ rackham.umich.edu/about/program-statistics. Accessed 7/1/2025.

About University of Michigan

Overview

The University of Michigan has a long and distinguished history dedicated to public service and engagement. The university was founded in 1817, 20 years before the territory became a state and 45 years before the Morrill Act of 1862 established the modern, public land-grant university system. It was one of the first public universities in the nation, and throughout its history has maintained the highest levels of distinction in education, scholarship, and research while remaining broadly accessible to a range of students.

The University combines a scale that exceeds all but a handful of American universities with a level of scholarly excellence that is equally rare. It consistently ranks among the top three U.S. public universities, and U.S. News and World Report ranks more than 100 of U-M's graduate programs in the top ten. With more than 67,000 undergraduate, graduate, and professional students on three campuses, the University's breadth and scale of intellectual strength are something that few public or private institutions can match. Its research expenditures – \$2.04 billion in 2024 – consistently place it among the leading universities in the nation.

U-M is one of the state's largest employers, with more than 57,000 employees, and is consistently ranked as one of the state's best employers by Forbes. The Ann Arbor campus draws an exceptional student body in-state, nationally, and globally, attracting a record of nearly 109,000 first-year applicants for fall 2025. Its athletic teams have produced Olympians and regularly compete for national championships, winning 59 in their collective history. U-M has more than 682,000 living alumni worldwide, whose generosity and philanthropy are sources of great pride for the University. Sharing its name with U-M's strategic vision, the University has launched the "Look to Michigan" campaign with a fundraising goal of \$7 billion to impact key global challenges — the largest advancement effort in U-M history and the largest known campaign goal of any public university. U-M's endowment now stands at more than \$19 billion, placing it among a very small set of institutions that are as highly endowed.

Mission

The mission of the University of Michigan is to serve the people of Michigan and the world through preeminence in creating, communicating, preserving, and applying knowledge, art, and academic values, and in developing leaders and citizens who will challenge the present and enrich the future.

Strategic Vision: Look to Michigan

In April 2024, after a year of gathering input from the campus community, the University released its strategic vision for the next 10 years and pledged to be the defining public university. This roadmap calls upon all of U-M to leverage its interdisciplinarity and excellence at scale to educate learners, advance society, and make groundbreaking discoveries to impact the greatest challenges facing humanity. The vision incorporates strategic planning efforts across the institution, including the UM-Ann Arbor, UM-Dearborn, and UM-Flint campuses, as well as Michigan Medicine.

To fully realize its vision as the defining public university, U-M will pursue excellence at scale in four key impact areas:

Life-Changing Education

U-M views access to education as a key stepping stone to active citizenship, societal contribution, and personal fulfillment. As a public institution, U-M will work to expand access by addressing affordability and student success for individuals from all backgrounds, while also leading the way in transforming educational models.

Human Health and Well-Being

Health and well-being are fundamental human rights. With this principle in mind, U-M aspires to become a model of excellence for meeting the public health challenges facing society, as well as addressing the needs within U-M campus communities.

Democracy, Civic and Global Engagement

U-M promotes democratic ideals, such as freedom of expression, civil engagement, equal protection, and respect across differences. Its campuses are abuzz each day with individuals from all regions of the globe, each bringing unique experiences, perspectives, and values to the University community.

Climate Action, Sustainability, and Environmental Justice

U-M is uniquely positioned to lead the effort to mitigate and adapt to climate change through groundbreaking research, education, campus operations, and creative programming designed to increase resilience and minimize avoidable impacts.

U-M's Flagship Campus: Ann Arbor

The University of Michigan has also commenced an inclusive planning process to realize the future of the Ann Arbor physical campus: Campus Plan 2050. Through purposeful alignment with the strategic vision framework, the campus plan outlines significant changes including an innovation district, an on-campus hotel and conference center, an automated transit system, and upgrades to key facilities. In concert with campus planning, the U-M community has made ambitious, multifaceted progress in recent years toward becoming carbon neutral, advancing climate action through innovative operations, valuable partnerships, applied research, campus involvement, and sustainable investments.

U-M's flagship campus in Ann Arbor includes more than 3,200 tenured and tenure-track faculty; nearly 5,300 additional academic personnel; and more than 52,000 undergraduate, graduate, and professional students.

A community of nearly 11,000 students lives in Ann Arbor campus housing. Students enjoy a variety of green spaces, recreation and parks, and study areas throughout campus, as well as a wide range of clubs, organizations, fraternities, and sororities. Big Ten athletics provides an opportunity for students to cheer on the Wolverines playing on 29 varsity sports teams. U-M is known for having the largest football stadium in the country, known as "The Big House," with an official capacity of 107,601. It brings U-M students, alumni, and Ann Arbor community members together throughout the season.

Ann Arbor is widely recognized as one of the best college towns in America, and the area boasts exceptional scenery, arts, culture, and industry. Detroit Metropolitan Airport is easily accessible for travel. In and around Ann Arbor, there are plenty of sites to explore as well as scenic strolls along the Huron River or spots where locals can be found kayaking, snowshoeing, and biking when they aren't attending a U-M athletic event.

Leadership

Domenico Grasso, Ph.D., President



President Domenico Grasso began his tenure on May 8, 2025. President Grasso is an accomplished environmental engineer; his research focuses on molecular scale processes that govern the ultimate fate of contaminants in the environment and development of new techniques to reduce risks to human health and natural resources. Prior to stepping into the presidency at U-M, Dr. Grasso served as chancellor at the University of Michigan-Dearborn and prior to this appointment served as provost of the University of Delaware, vice president for research and dean of the Graduate College at the University of Vermont, was the Rosemary Bradford Hewlett Professor and founding director of the Picker Engineering Program at Smith College. He holds engineering degrees from Worcester Polytechnic Institute (B.Sc.), Purdue University (M.S.), and the University of Michigan (Ph.D.).

Laurie K. McCauley, DDS, MS, Ph.D., Provost and Executive Vice President for Academic Affairs



Dr. Laurie McCauley, Provost and Executive Vice President for Academic Affairs, oversees U-M's 19 schools and colleges. In partnership with the other executive vice presidents, Provost McCauley leads U-M's Campus Planning 2025 initiative, as well as the university's Strategic Visioning process. Before her appointment as provost, in May of 2022, Dr. McCauley served as dean of the U-M School of Dentistry. She is an active researcher supported by the National Institutes of Health and a member of the National Academy of Medicine. She is also a recipient of the Ida Gray Award in recognition of her outstanding efforts in promoting multicultural ideals. Since taking on the role of provost, she has committed to creating a more accessible and inclusive environment for people with disabilities at the university, as well as integrating disability awareness into more educational contexts across campus. Additionally, she serves as a leader in the university's Well-Being Collective.



Liberty Street is home to two iconic art-house theaters and many local shops and restaurants

The Ann Arbor Community

The vibrant and active city of Ann Arbor is consistently rated as one of the nation's top college towns. In addition to being the hometown of a world-class university, Ann Arbor is home to many high-tech research companies and charming neighborhoods with a rich mix of cultures. Downtown Detroit – with its eclectic mix of entertainment and professional sports – is less than an hour's drive away, and Detroit Metro Airport offers a nearby gateway to the globe as a hub for Delta Airlines.

Although geographically small, the Ann Arbor area is perhaps most renowned for its cultural offerings and nightlife. From cutting-edge art exhibits and dozens of unique galleries to performances by legends in all of the performing arts, there are abundant opportunities to enjoy arts and culture throughout the community. The Ann Arbor Art Fairs envelop the campus and downtown areas with nearly 500,000 visitors over a four-day span every July. [The Ark](#) is one of the finest music clubs anywhere, with 300 performances yearly.

Ann Arbor and Washtenaw County provide a bounty of recreational settings for hiking, cycling, canoeing, or golfing. In the warmer months, the area offers street festivals and outdoor fairs. “Foodies” will appreciate the nearly 300 restaurants within a 20-mile radius of Ann Arbor, with options ranging from traditional Italian bistros to trendy contemporary American restaurants.

Ann Arbor is a highly educated community of 115,000 where nearly two-thirds of residents have at least a bachelor's degree. It regularly makes a wide range of “top ten” lists rating everything from the happiest places to live and most intelligent cities, to the best educational offerings for kids, and top communities for venture capital investments.

Ann Arbor is home to such recognized brands as Domino's Pizza, Zingerman's Delicatessen, Toyota Technical Center, and Google AdWorks.

The University of Michigan welcomes you to learn more. [Click here.](#)



Summer flowers bloom in front of Rackham Graduate School

Procedure for Candidacy

All applications, nominations, and inquiries are invited. Applications should include, as separate documents, a CV or resume and a letter of interest addressing the themes in this profile.

WittKieffer is assisting the University of Michigan in this search. For fullest consideration, candidate materials should be received by September 21, 2025. Professional references are not requested at this time.

Nominations, inquiries, and applications can be directed to:

Zach Smith, Ph.D., Sandra Chu, and Luis Bertot

UMichDeanKinesiology@wittkieffer.com

The University of Michigan is an equal opportunity/affirmative action employer dedicated to the goal of building a culturally diverse and pluralistic university community committed to teaching and working in a multicultural environment. Potential applicants who share this goal are encouraged to apply.