



401 E LIBERTY PROJECT

TOWN HALL #1

December 11, 2025

Welcome and Thank You.

CAMPUS
CONTEXT &
PROJECT
VISION

NEW
WORKPLACE
FRAMEWORK

Q&A

UPCOMING
ENGAGEMENT

The 'Why' behind the Office Transformation



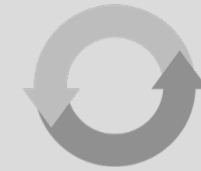
Optimize Space Management and Stewardship

Consolidates multiple locations of varying condition into a single, high-quality space in a long-term lease near Central Campus. Uses the same guidelines and planning principles as recent large U-M capital projects (Pharmacy, Leinweber).



Foster Cohesion and Collaboration

Bring together units under the Provost's Office in a collaborative environment that can adapt as work evolves, fostering new connections and supporting emerging needs.



Accommodate Hybrid Work

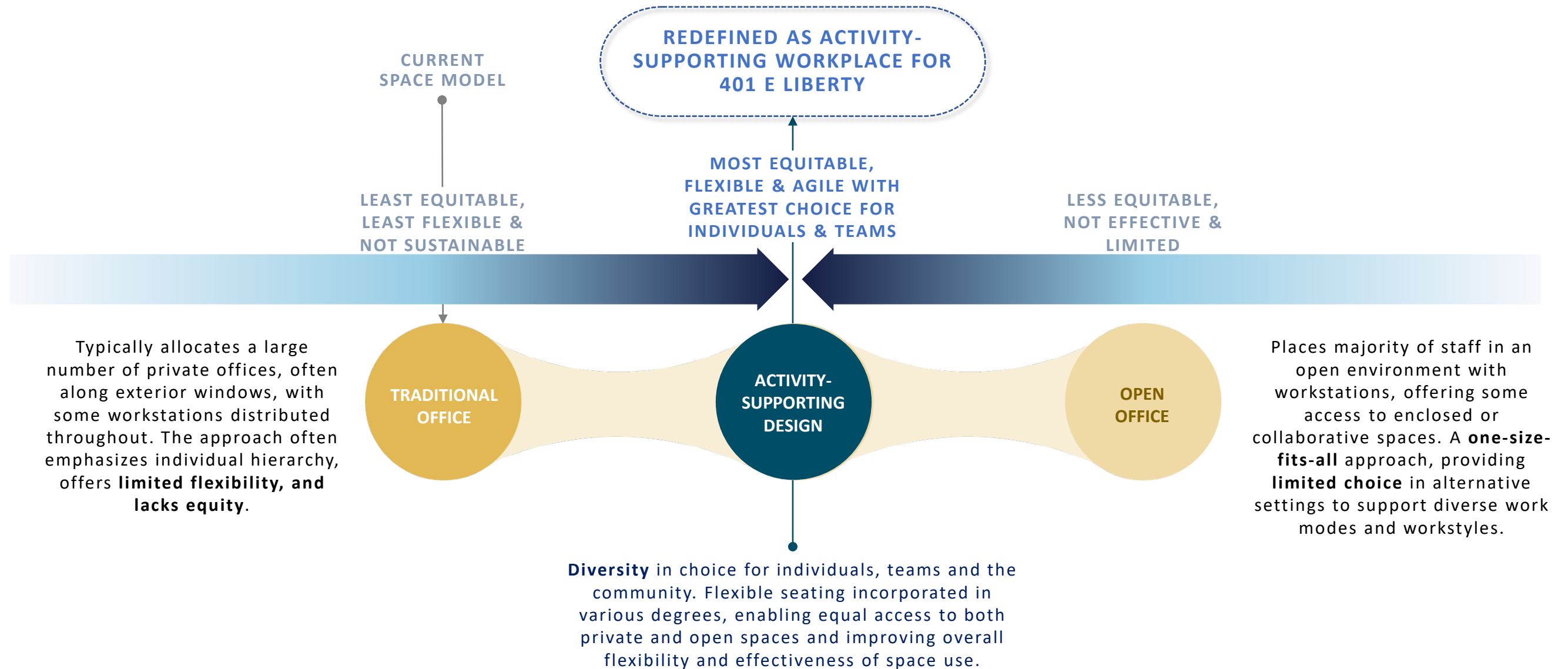
Better aligns the space footprint with how we work today by balancing heterogeneous remote experiences with a welcoming shared in-person setting, providing ample access to daylight and desirable common amenities.



Model a Sustainable Workplace

Leverage best practices at U-M and across higher education to achieve higher utilization per square foot, while satisfying needs for focus work, privacy, team meetings, and large gatherings.

New Workplace Ecosystem as a Framework



Translating the Framework



- individual space: open, solo or side-by-side work
- individual space: open, ultra quiet zone
- individual space: enclosed, hyper-focus or one-on-one
- social/community zone
- team spaces: meetings, flex, multi-purpose

Q & A



Looking ahead...

Next few months...

First FAQ launch with Town Hall content followed by subsequent series in January

Post- Town Hall Directors & Ambassadors Sessions

Town Hall #2 with Detailed Dive into Floor Plan & Design Features

Key Furniture, Technology and Design Components Engagement

Operational Norms and Processes Discovery

Thank you.

Thomas Finholt

*Senior Vice Provost for Academic and Budgetary Affairs, Office of the Provost
Professor of Information, School of Information*

Sara Blair

*Vice Provost for Academic and Faculty Affairs and Arts & Humanities, Office of the Provost
Patricia S. Yaeger Collegiate Professor of English Language & Literature, College of Literature, Science, and the Arts*

Fadi Musleh

Assistant Vice Provost and Chief Strategist for Integrated Space, Academic, & Capital Planning, Office of the Provost

Alexis Kim

Vice President and Senior Workplace Strategist, SmithGroup

Project website: myumi.ch/401elibrary

Email: 401liberty@umich.edu

401 E Liberty Project Context within Campus-wide Efforts

Modern Workplace Ecosystems & New Approaches: Examples on campus with mostly unassigned staff spaces, hybrid work environments

Student, Public, and Academic-Facing

- Computer Science & Engineering (CSE) department staff
- University Library [*Michigan Publishing, Digital Scholarship, Deep Blue, Research Data*]
- Student Life - Sexual Assault Prevention and Awareness Center (SAPAC) (*highly confidential*)
- Student Life - Student Accessibility & Accommodation Services (SAAS) (*highly confidential*)
- Student Life - Center for Campus Involvement
- Student Life - Conference & Event Services
- School of Public Health [*Student affairs (highly confidential), Advising (highly confidential), Career services*]

Academic Administration

- LSA Dean's Office reporting units [*Marketing & Communications, Development, HR (highly confidential), Finance, IT*]
- School of Public Health Dean's Office reporting units [*Marketing & Communications, Development, HR (highly confidential), Facilities, Research (highly confidential)*]
- University Library [*HR (highly confidential), Finance*]
- College of Engineering

Other Administrative

- University HR (*highly confidential*)
- Facilities & Operations [*HR (highly confidential), Finance, IT*]
- Architecture, Engineering, and Construction [*Design Management, Interior Design, Engineering, Construction, Planning & Communication*]
- Information Technology Services (ITS)
- Finance [*Treasury, Insurance (highly confidential), Financial Planning & Analysis, Financial Operations, Sponsored Programs, Tax Office, Tax, Enterprise Strategy, Risk Management (highly confidential), Procurement*]
- OVPR - Office of Research & Sponsored Projects
- Student Life [*Marketing & Communications, HR (highly confidential), Finance, IT, University Unions*]