

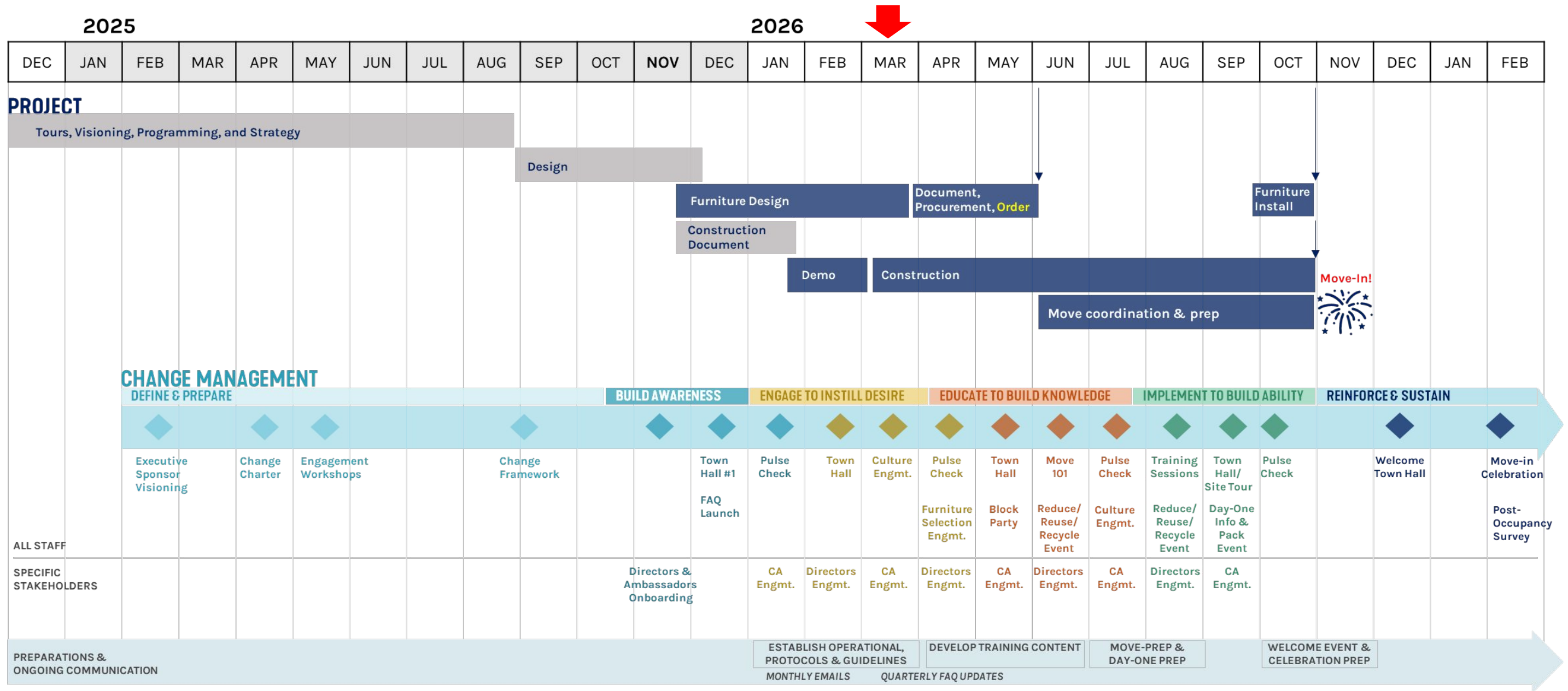


# 401 E LIBERTY PROJECT

INFORMATION SESSION - OPTIONAL PRE-READ

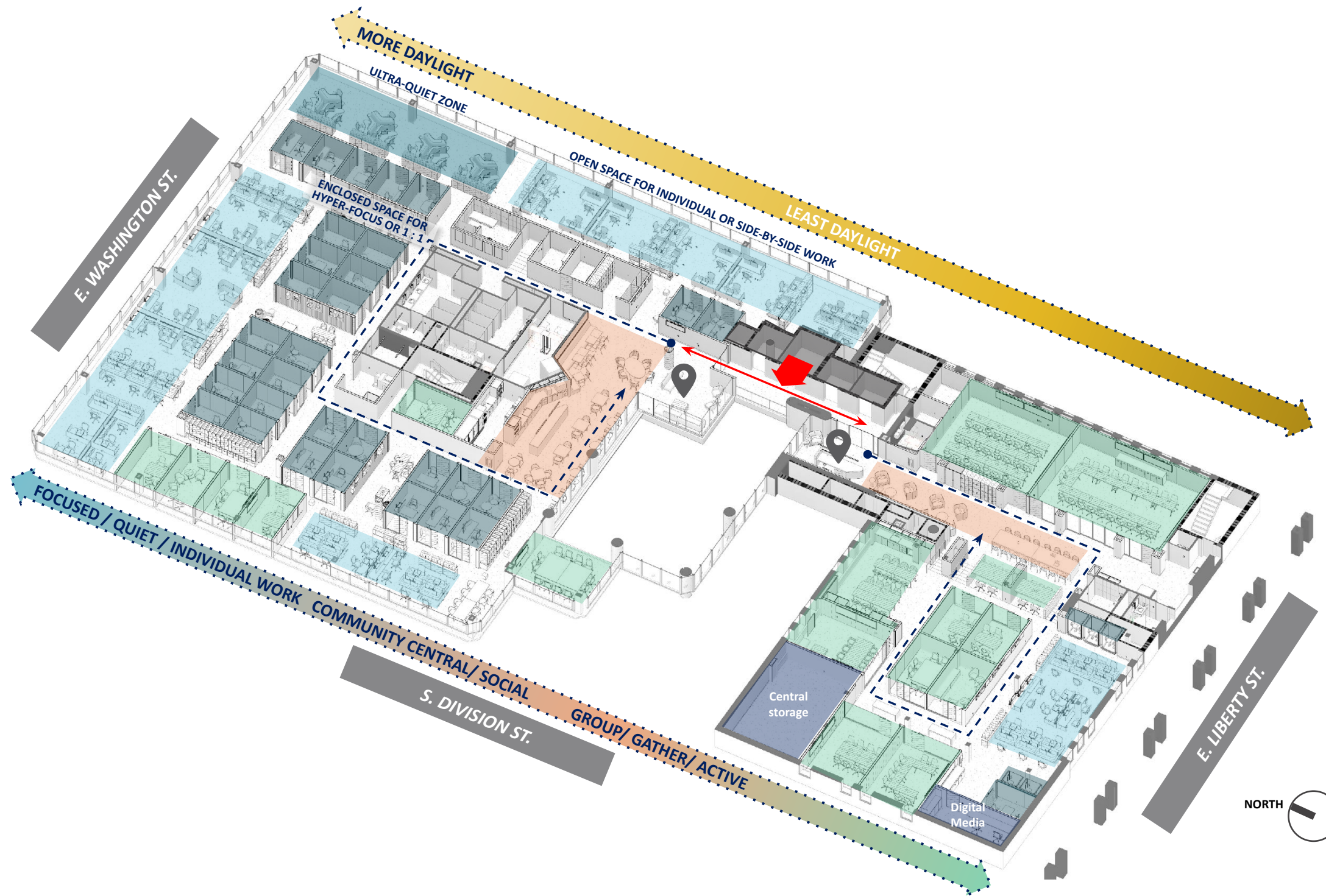
March 11, 2026

# Schedule & Engagement Update



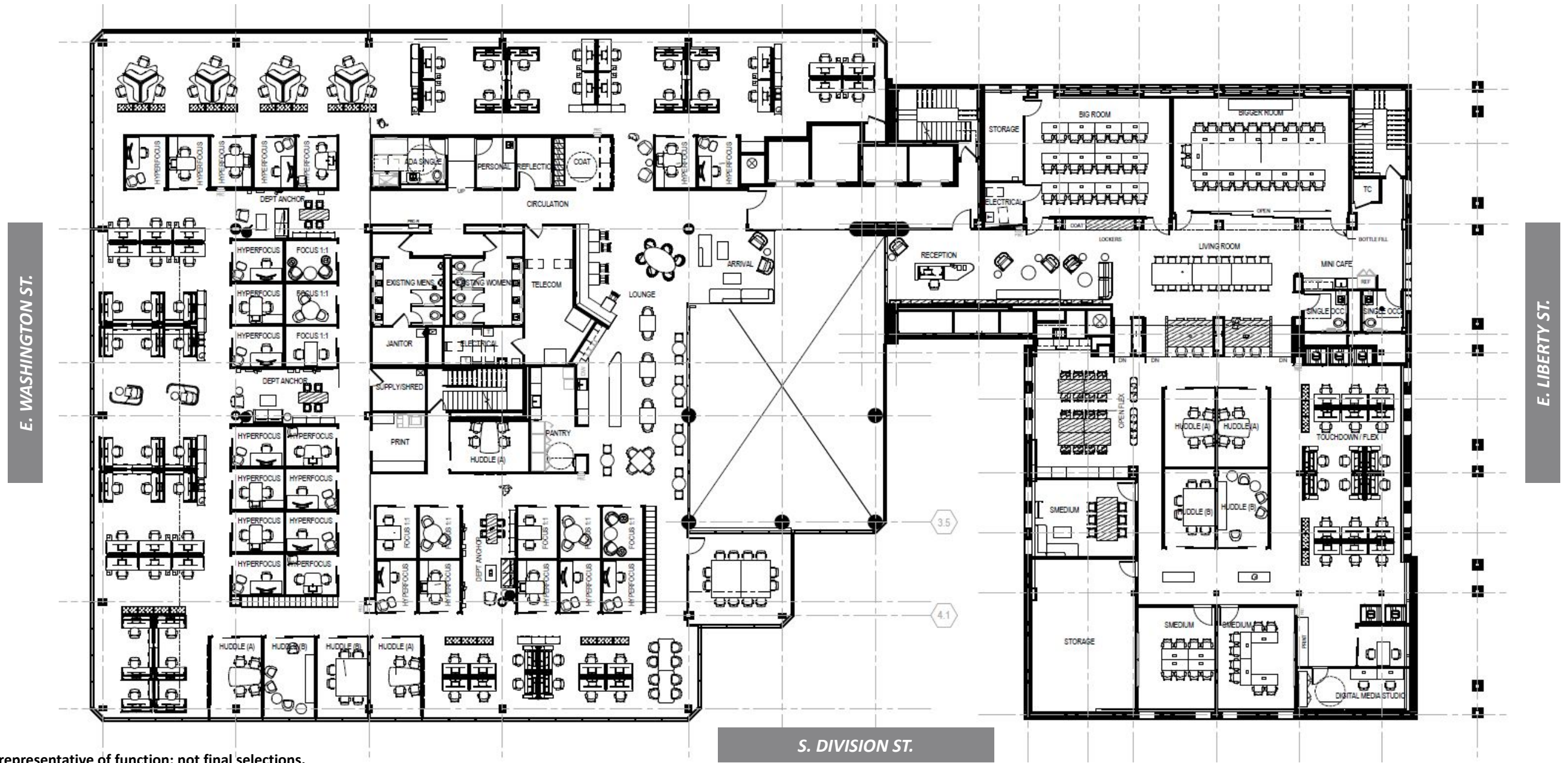
# Translating the Framework

(Previously shared)



- individual space: open, solo or side-by-side work
- individual space: open, ultra quiet zone
- individual space: enclosed, hyper-focus or one-on-one
- social/community zone
- team spaces: meetings, flex, multi-purpose

# Detailed Floor Plan



Note: Furniture layouts are representative of function; not final selections.

# 401 E Liberty Renderings

**Note: Renderings are illustrative and intended to convey overall design intent and aesthetics. Colors, finishes, and furniture shown are conceptual and may not reflect final selections.**



### ***Kitchen & Lounge***

Lounge space with a variety of seating for sharing meals, gathering, or working with a fully equipped kitchen space, an island, plus enclosed pantry space for additional supplies and prep area.

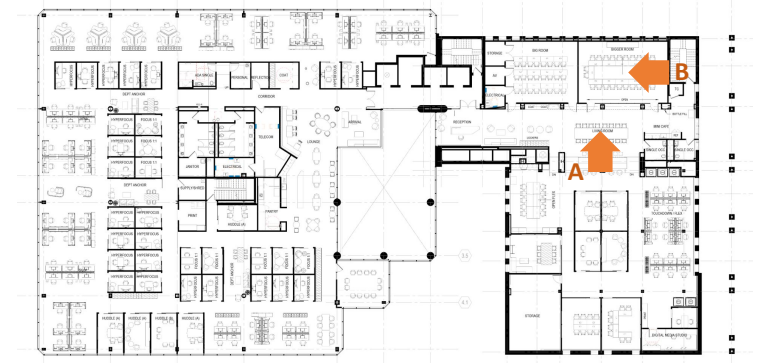
Note: Renderings are illustrative and intended to convey overall design intent and aesthetics. Colors, finishes, and furniture shown are conceptual and may not reflect final selections.



**Visitor Entry & Living Room**

South Wing Entry space with reception area which will include branding in the future, looking down the Living Room space that can flex as pre-function and flex space for events in the Big & Bigger Rooms to the left. Pink areas are highlighting additional branding opportunities, and they are not intended to convey color selection.

Note: Renderings are illustrative and intended to convey overall design intent and aesthetics. Colors, finishes, and furniture shown are conceptual and may not reflect final selections.



**A. Living Room & View into Bigger Room/ Multi-Purpose Room**

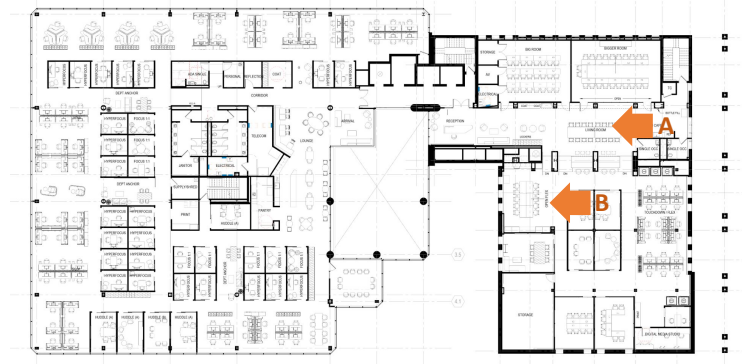
Living Room space looking into the Bigger Room/ Multi-Purpose Room with movable partition wall with ability to spill into the Living Room space. Living space can also function as transitional/prep space for events or community engagements that will occur in the Big or Bigger Rooms



**B. Bigger Room**

Inside the Bigger Room with folding wall that opens up to the Living Room as transition or pre-function space, equipped with technology and writing surfaces.

Note: Renderings are illustrative and intended to convey overall design intent and aesthetics. Colors, finishes, and furniture shown are conceptual and may not reflect final selections.



**A. Living Room & Transitional Spaces**

View from the south end of the Living Room space with the view towards the Reception space and the north wing beyond the windows through the atrium space.



**B. Multi-Purpose Flex Room**

Transitional and prep space with storage for events and meetings, also adjacent to the Main Storage down the hall, surrounded by multiple Medium Meeting Rooms.

Note: Renderings are illustrative and intended to convey overall design intent and aesthetics. Colors, finishes, and furniture shown are conceptual and may not reflect final selections.

# Supporting the New Workplace Ecosystem

*As the 401 E Liberty project enters its next phase, we are in the process of hiring for a new role!*

## *Director of Operations & Workplace Experience*

This position reflects the scale and complexity of the work ahead as we move through the spring and summer, into move-in, early operations, and beyond.

The role will provide continuity, coordination, and informed judgment during this critical period, partnering closely with department leaders, staff, and the project team as the new workspace comes online. Reporting jointly to senior leadership, this position signals our commitment to entering this next phase with the right structure, attention, and support in place. Interviews to take place in March and April, with department leaders participating in the process.

At a high level, the new position's responsibilities will include the following:

- Serve as the single point of contact for all users of the 401 E Liberty workspace
- Provide operational oversight from move-in through early and steady-state operations
- Coordinate across units, facilities, and partners to ensure continuity and timely issue resolution
- Support a consistent, high-quality workplace experience for staff and visitors

